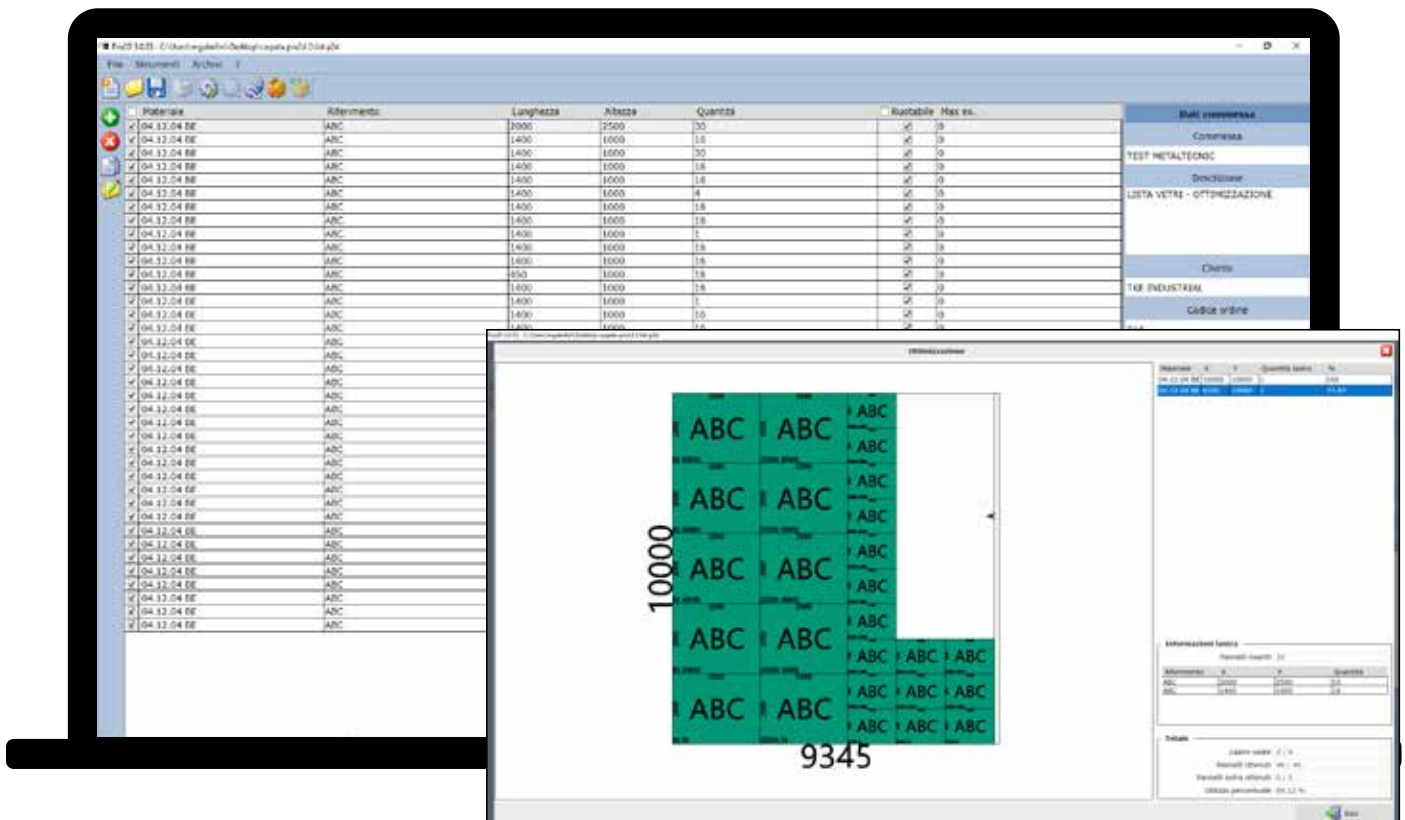




# Pro2D Pro 2D

Pro2D optimises panel and glazing cutting and can be used individually or integrated with ProF2.

The program calculates the cutting to be carried out according to the size of the available panes. Any reusable excess material is automatically stored for later use. The printed documentation shows the operator the cutting sequence for each panel.



## Features of Pro2D:

Flat optimisation of rectangular shapes

Guillotine or nested optimisation criterion

Materials management with or without venation

Panels warehouse

Automatic loading/unloading of panels from the warehouse

Print layout optimisation

Automatic import of orders from ProF2