



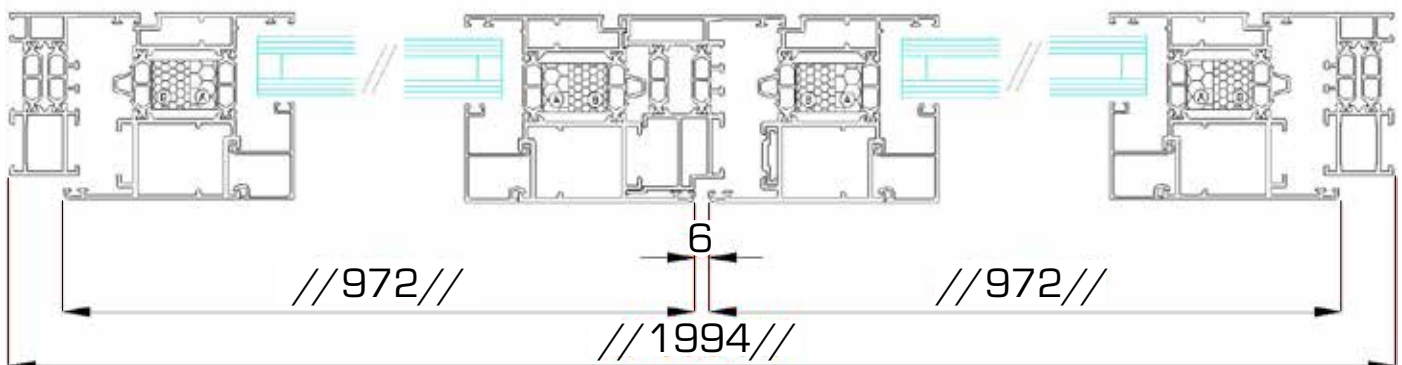
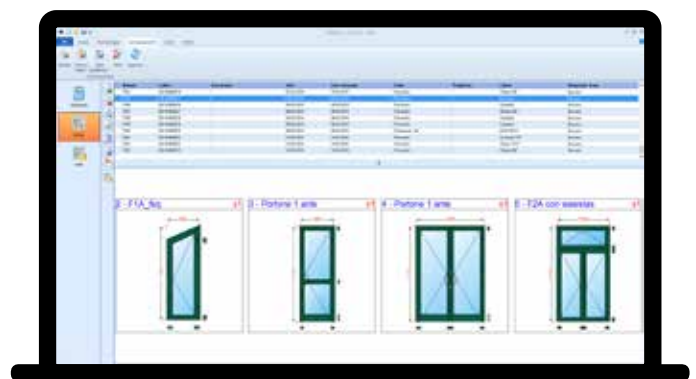
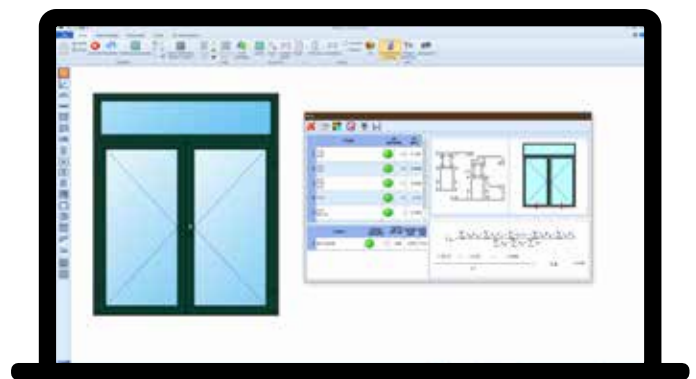
# ProF2

Pro F2

Available in four versions, ProF2 is the ideal solution for the management of door and window frames manufacturers. The fully scalable versions allow easy product upgrades that follow the growth of your business.

## Design Environment

ProF2 can make any type of frame: rectangular, polygonal or arched, made of aluminium, PVC, steel or aluminium-wood systems. The CAD-based design environment allows the operator to design the door and window frames in internal or external view, generate sections and nodes or images of frames that can be exported to DXF or DWG. The 3D view shows the operator all the details of the frame, including machining. ProF2 displays the Uw value, the profile and glazing cutting list, and the list of accessories directly in the design environment; these can then be inserted in parameter or optional mode, depending on the size and weight of the frame.



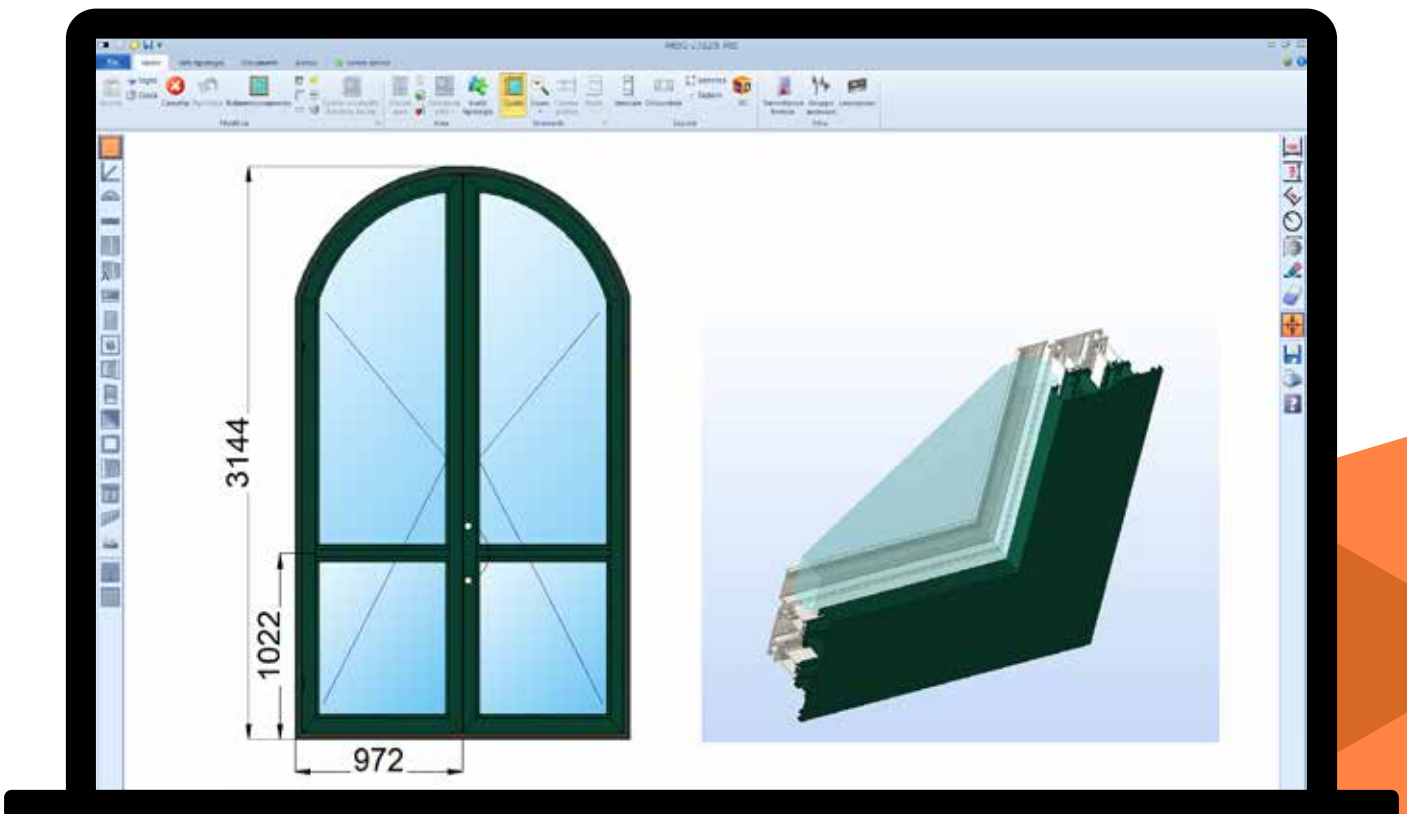
## Uw Calculation and CE Marking

A modern business must also comply with current regulations, which is why ProF2 features an area dedicated to:

- Uw Calculation and verification of the limits according to the climate zone
- Management of Initial Type Tests (ITT) including verification of extensibility
- Printing of the EC declaration of performance
- Management and printing of the FPC production control plan
- Printing of declarations of conformity for tax bonuses

## Order Management

ProF2 easily and accurately analyses the production costs of a frame or of an order for door and window frames, calculating the material and the time it takes to complete it. ProF2 can also calculate the analytical selling price of each frame based on the cost of production. Several options allow the operator to customise the layout of the technical labels for production and quotations, which can be viewed, printed or exported to Word®, Excel® and PDF.





## Grid Price Lists

ProF2 calculates grid price lists by setting the dimension and steps for each type of frame. The price lists can be printed or exported to Excel®.

## Profile Archive

An FST archive, with more than a thousand ready-to-use series of profiles, makes starting up ProF2 in your company fast. The archives are open and new systems can easily be added independently. On request, FST can develop new ones.

## Warehouse Management and Orders to Suppliers

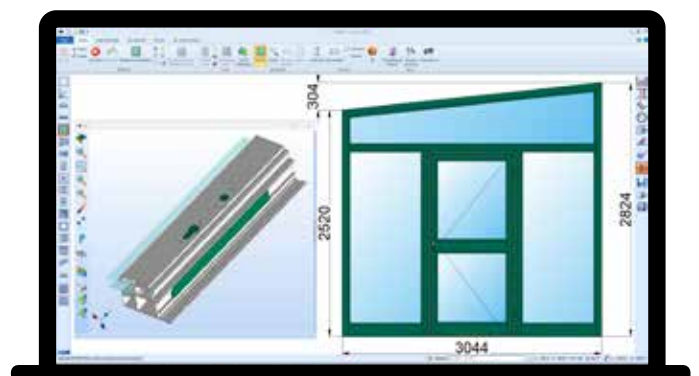
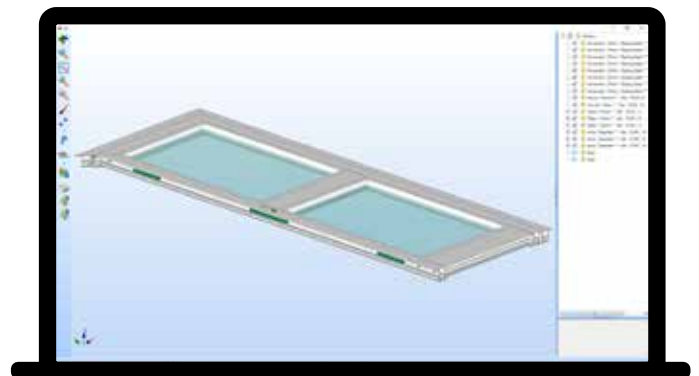
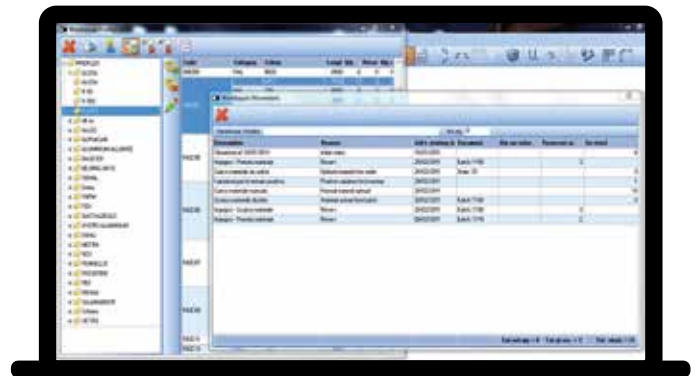
Starting from a production batch, you are just a click away from managing the work and the unloading of the material from your warehouse. ProF2 automatically stores production-generated profile offcuts and reuses them in new orders.

## Cutting Optimisation

In order to minimize the waste of the bar, ProF2 considers multiple factors, such as: different bar lengths, offcuts, reversibility, aggregation in sets, or optimum bar length search, and always offers the best possible cutting sequence.

## Machines Integration

ProF2 transfers all production information to the machines in the workshop, such as trimmers, machining centres, welding machines, polishing machines or automatic assembly benches. The barcode generated by ProF2 identifies the part at all stages of the process.



## Features of ProF2 versions:

	OPEN	LT	STD	PRO
Guided design of rectangular frames	✓	✓	✓	✓
Frame scale design in CAD 2D	✓	✓	✓	✓
Insertion of transoms and mullions	✓	✓	✓	✓
Cutting list optimization	✓	✓	✓	✓
Printing and calculation of quotations and cutting lists	✓	✓	✓	✓
Analysis of production costs	✓	✓	✓	✓
Insertion of automatic / manual dimensions	✓	✓	✓	✓
Management of compound profiles (e.g. wood / aluminium, PVC)	✓	✓	✓	✓
Management of accessories, groups of parametric and optional accessories	✓	✓	✓	✓
Export of prints to Word®, Excel®, or PDF	✓	✓	✓	✓
Export of images, glazing and panels to DXF or DWG	✓	✓	✓	✓
Export of cutting lists to trimmers via FOM protocol	✓	✓	✓	✓
View of the sections in CAD environment	✓	✓	✓	✓
Export of sections to DXF or DWG	✓	✓	✓	✓
Calculation of the thermal transmittance of the Uw frame	✓	✓	✓	✓
Handling of CE documentation and FPC control plan	✓	✓	✓	✓
Guided creation of frames with 3/4/5 polygonal sides		✓	✓	✓
Inserting oblique transoms		✓	✓	✓
Manual management of the profile offcuts		✓	✓	✓
Connection driver with non-FOM trimmers		✓	✓	✓
Grid price list calculation module (PLM Base)		✓	✓	✓
Use of categories and lists created with PLM		✓	✓	✓
Guided composition of frames with arches			✓	✓
Definition of frames of any shape, even with curved sides			✓	✓
Management of the stock of profiles, accessories and orders to suppliers			✓	✓
Automatic management of the offcut warehouse			✓	✓
Advanced features for the design of banded frames			✓	✓
Advanced optimization and optimum bar length search			✓	✓
3D rendering of the frame and export to STL			✓	✓
Automatic import of the machining list from FOM software				✓
Graphic interface for connecting of the processing to the typology				✓
Machining assignment based on the profile or accessory used				✓
Export of list to work centres or lines via FOM protocol				✓