



**Software for Machinery Productivity Monitoring**

05.2023\_versione 1.0



FST S.r.l. Via Mercadante 85, I - 47841 Cattolica (RN), Tel. 0541.832.888

[info@fomsoftware.com](mailto:info@fomsoftware.com)

[www.fomsoftware.com](http://www.fomsoftware.com)

[fomsoftware.com](http://fomsoftware.com)





# FST Statistics



FST Statistics allows constant monitoring of the productivity of the machine or of the production line it is associated with. Once installed on the machine, or at the office, the software collects data on performance and productivity within a selected time period.

## Data Export for Integration with MES Systems

The data generated by FST Statistics can be exported in CSV format, enabling further analysis in the most common MES systems or directly in Microsoft Excel®. Upon request, it is possible to export data with customized file formats based on the customer's needs.

## Data Display

The collected information is presented in the form of a table or graph, allowing for quick analysis without interfering with normal production activities.

## Available Versions

- Statistics C4 – double head sawing machines and 4-axis machining centers by FOM Industrie
- Statistics L5 – machining and cutting lines, and 5-axis machining centers by FOM Industrie
- PQ Stat - Profteq machines
- GS Stat - Graf Synergy machines

## Features of FST Statistics:

Machine efficiency reports

Production reports

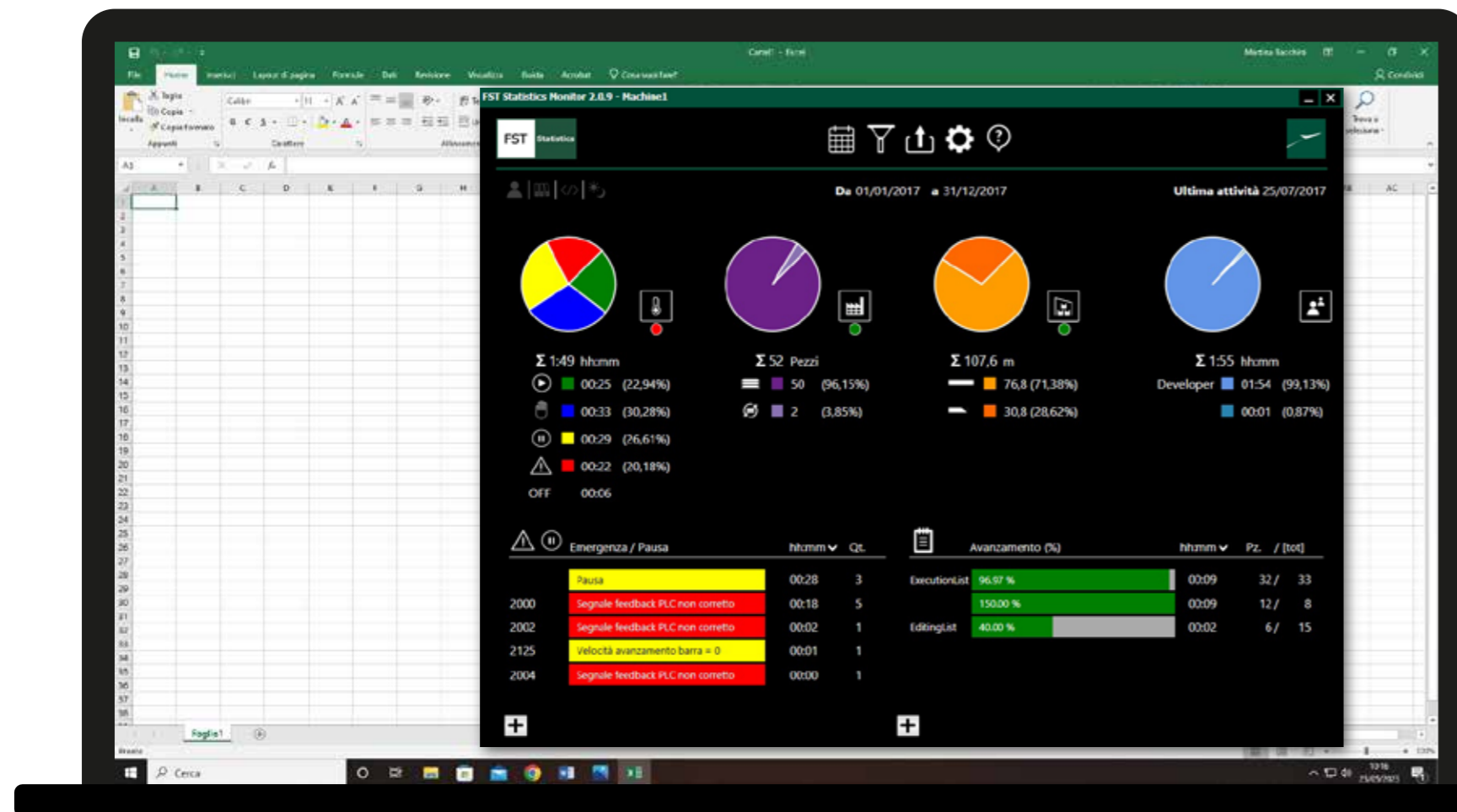
Incoming material reports

Operator work time reports

Error reporting and machine alarms by type and frequency

Progress status of production orders

Data export to files for integration with MES and Microsoft Excel®



\* features may vary depending on the connected machine