



The simple solution to optimize extrudates machining

Index

Industrial Suite	01
Production Plus	04
Main features	
Creation of cutting and machining lists	
Optimization of the cutting list	
Connection with machines	
Parametric Articles	
Integration with management software	
Solid Plus	08
Automation of data transfer from 3D technical drawing to the workshop	
Full integration with machines	
Macro management: automation of complex machining recognition	
Multi-machine management	
Measurement probe management	
FSTML	12
Features of FSTML	
Machine connection	
Centralized macro library	
Parametric macro management and machinings replacement rules	
FSTCPQ	14
Quick and guided quotation	
Always updated price lists	
Quotations on the go	
User level management and sales network control	
Features of FSTCPQ	
WSVisor	16
Data Export for Integration with M.E.S. Systems	
Data Display	
Machine Compatibility	
Features of WSVisor	

Industrial Suite



Industrial Suite is FST's modular, adaptable, and efficient solution dedicated to companies that work with extrudates. It consists of several interconnected products that can be integrated with each other or purchased individually, optimizing the work of every business area, from sales to production.



Creation of cutting and machining lists quickly and easily, and sending them to one or more production lines.



Automatic conversion of 3D drawings into executable programs for production.



Machining Library management.



Possibility of integration between Production Plus and ERP management software, allowing automatic order reception and production organization.



Online configuration of products and quotations.



Desktop application for monitoring machines productivity.

INDUSTRIAL SUITE

PRODUCTION



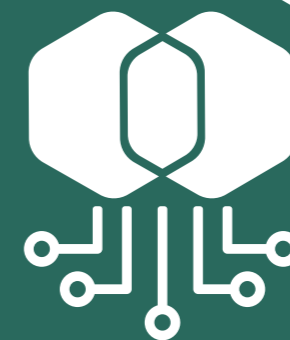
TECHNICAL OFFICE



SALES



INTEGRATED PROCESS MANAGEMENT





Production Plus



The software to create cutting and machinings lists, quickly and easily

Production Plus is the ideal solution for quickly creating a cutting and processing list by entering the measurements of pieces and machinings, or by recalling parametric items. The software calculates the optimization of bar cutting, also using bars of different lengths, and generates files compatible with all FOM machines, such as sawing machines, machining centers, machining and cutting lines. Moreover, there are available drivers that generate

files for machines from other manufacturers. Without requiring a complex data and archives structure, Production Plus makes it simple and fast to transfer production data from the technical office to the machines. Specific file formats allow Production Plus to import production lists from the company's management system, completely automating the productive process.

Main features:

Simplicity: it does not require a complex data and archives structure

Optimization of bar cutting, minimizing waste

Graphic visualization of the 3D piece

Export of the cutting or machinings list to multiple machines

Integrable with the company's management system

Management of offcuts stock

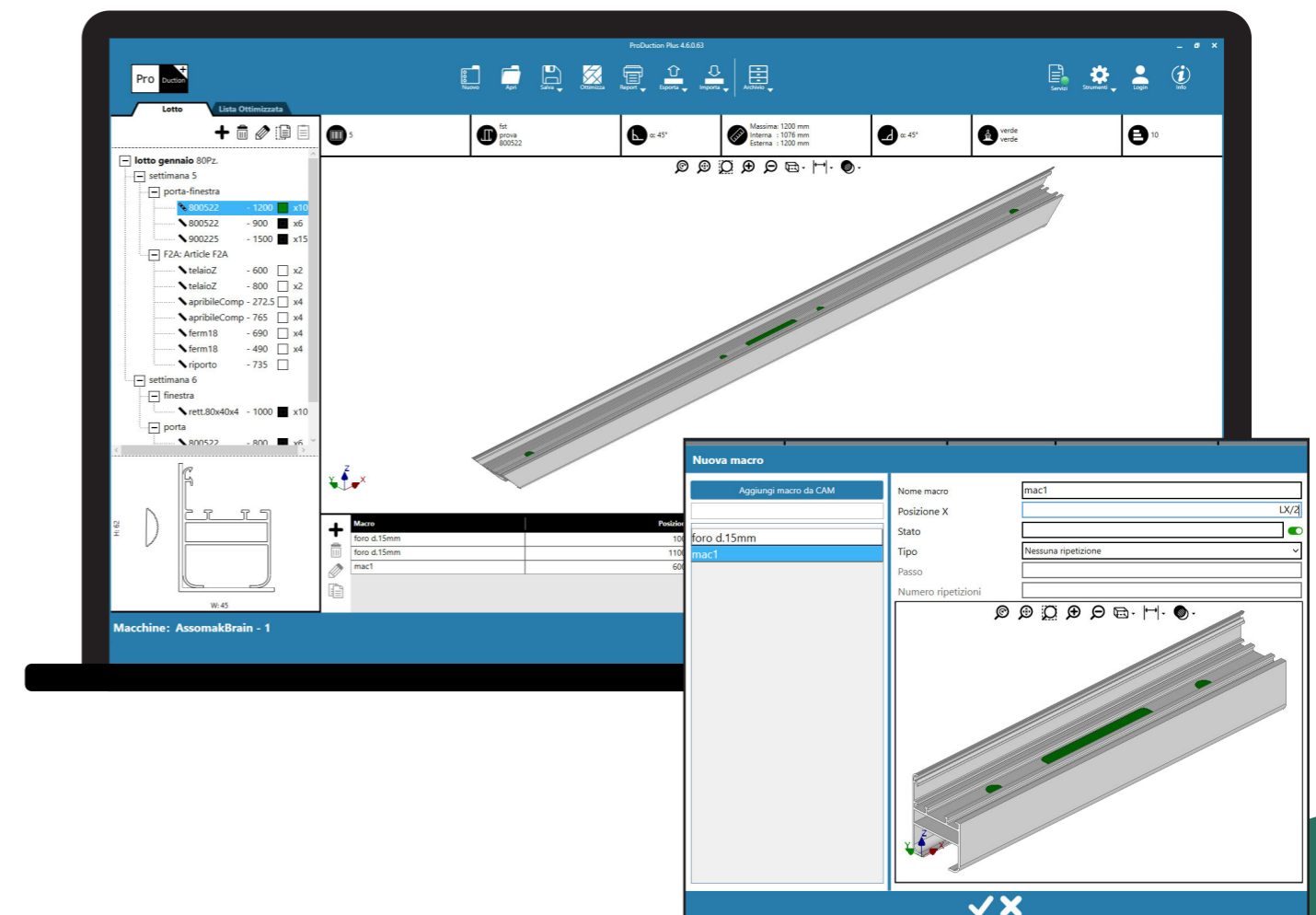
Prints: bars summary, optimized cutting list and piece labels (it requires a dedicated printer)

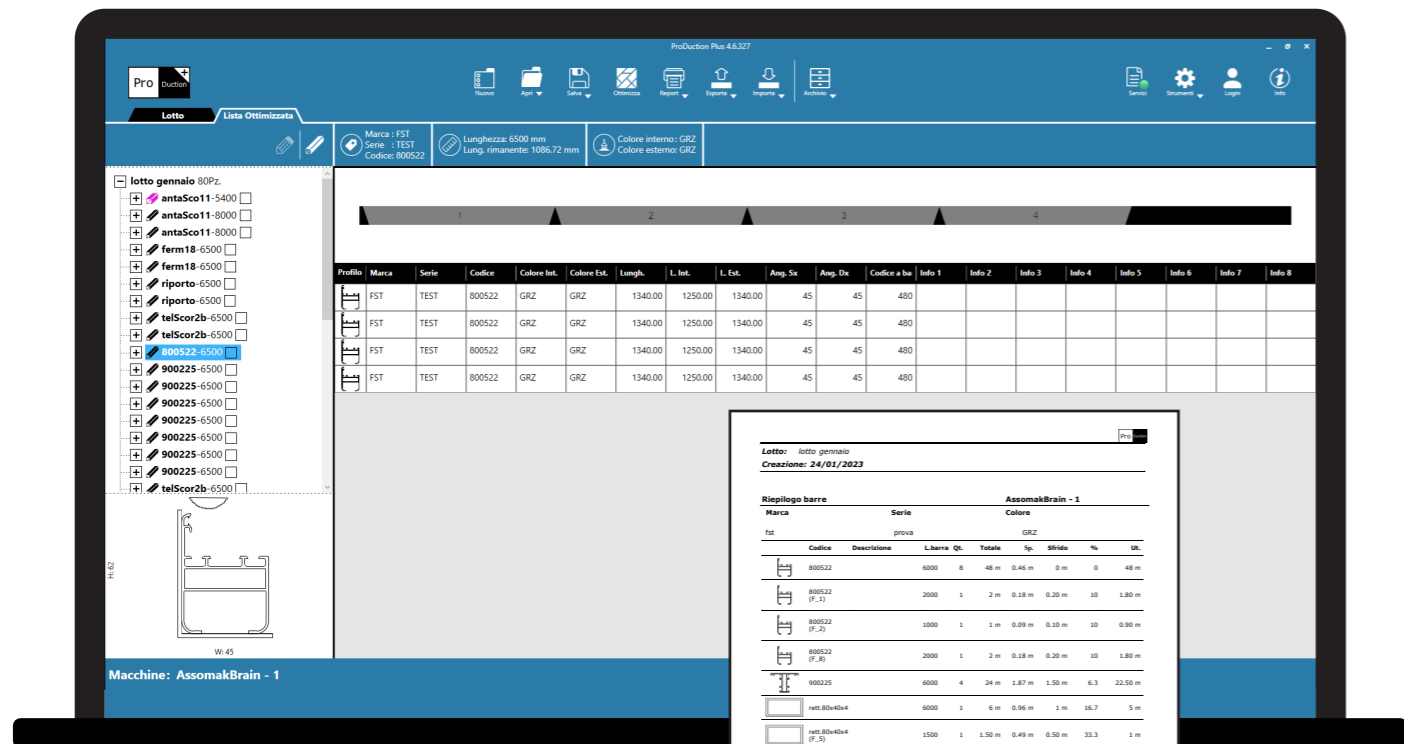
Creation of cutting and machining lists

The Production Plus interface allows for easy creation of a pieces list by defining for each one: profile type, cutting angle and lengths. Machinings can also be defined for each piece, using repetition rules and/ or parametric formulas when necessary. The threedimensional visualization of the piece immediately shows the outcome, resulting in significant time savings and error reduction.

Optimization of the cutting list

Once the pieces list is created, Production Plus generates an optimized cutting list, using both new bars and offcuts. The advanced features of the Production Plus optimizer allow for finding the optimal bar, using bars of different lengths, or managing of bundles cutting.

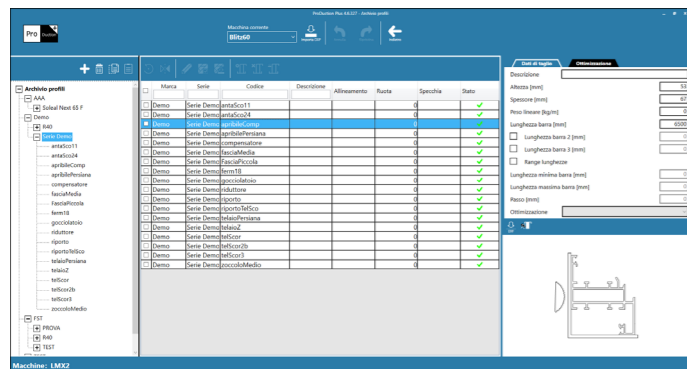




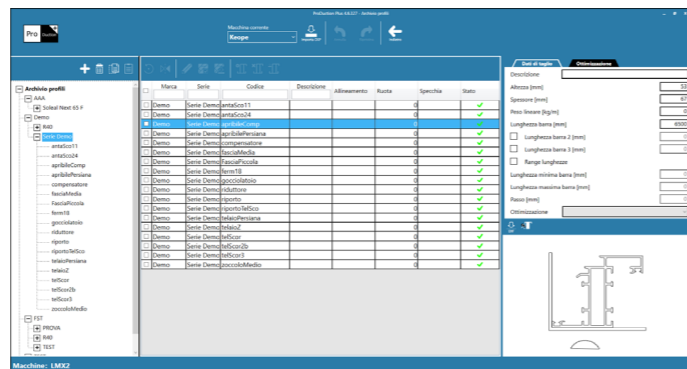
Connection with machines

One of the great advantages of Production Plus is the ability to create lists, from a single software, that can be sent to different types of machines. This allows for optimal utilization of each machine's features by sending and reading data, such as macros, from all FOM softwares. Dedicated drivers enable the integration of the software with machines from other manufacturers as well.

Profile on Blitz machine



Same profile on Koepe machine

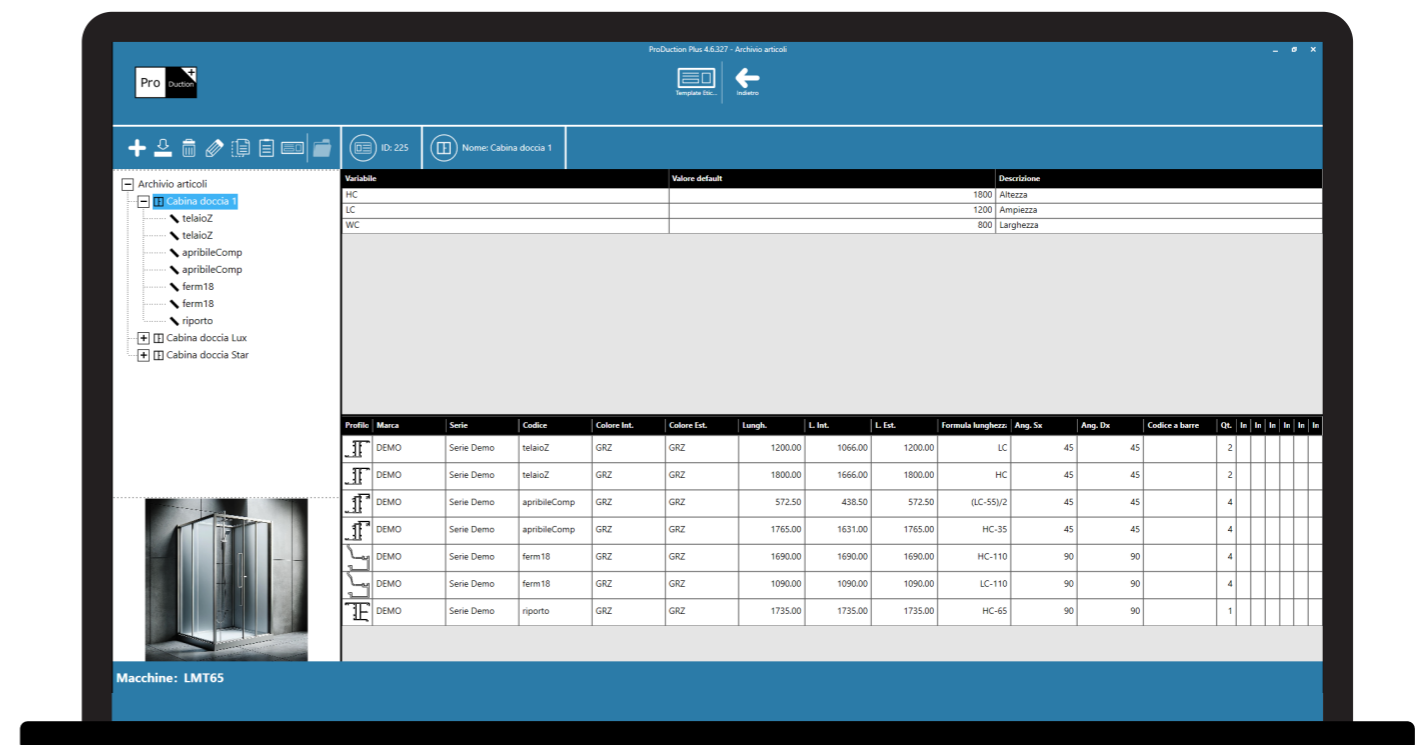


Parametric Articles

Production Plus manages parametric articles composed of multiple pieces whose dimensions or machinings are referenced to the parameters of the article. The articles are stored in the software archive, and when recalled during the creation of a list, the contained pieces are recalculated, based on the new parameters, and added to the list.

Integration with management software

In order to integrate the product with companies' computer systems, Production Plus is capable of importing files generated by the company's ERP systems containing lists of pieces to be produced or lists of articles and their respective parameters. This way, Production Plus becomes the link between the company's management system and the machines in the workshop.





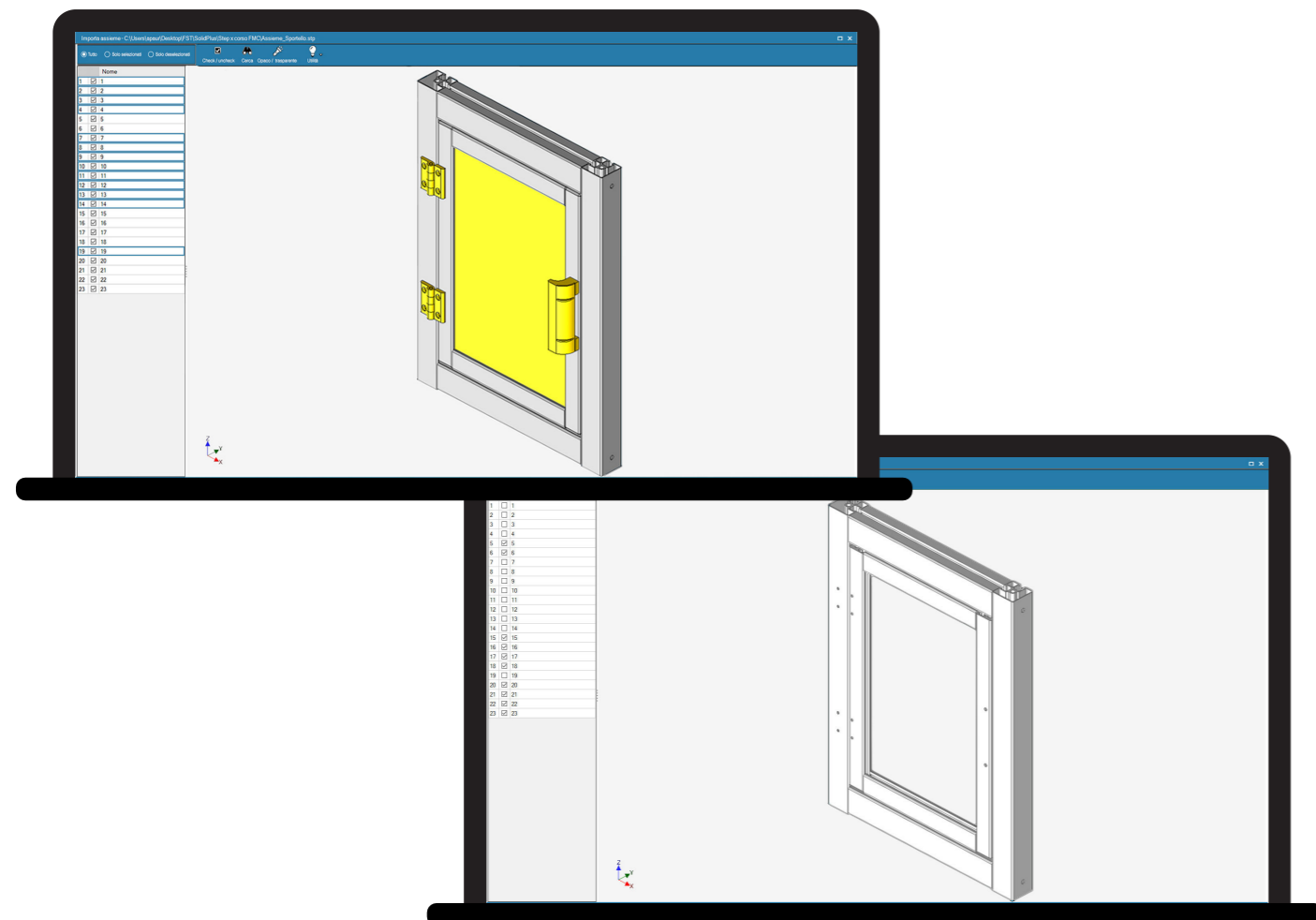
Solid Plus

Solid Plus

The software to get from 3D drawing to production easily and quickly

Solid Plus imports 3D drawings in STEP format, generated with 3D CAD software and creates the CAM program without requiring a dimensioned drawing. The software recognizes and processes all the piece data (profile section, length and cutting angles, machinings), assigns the machining tools,

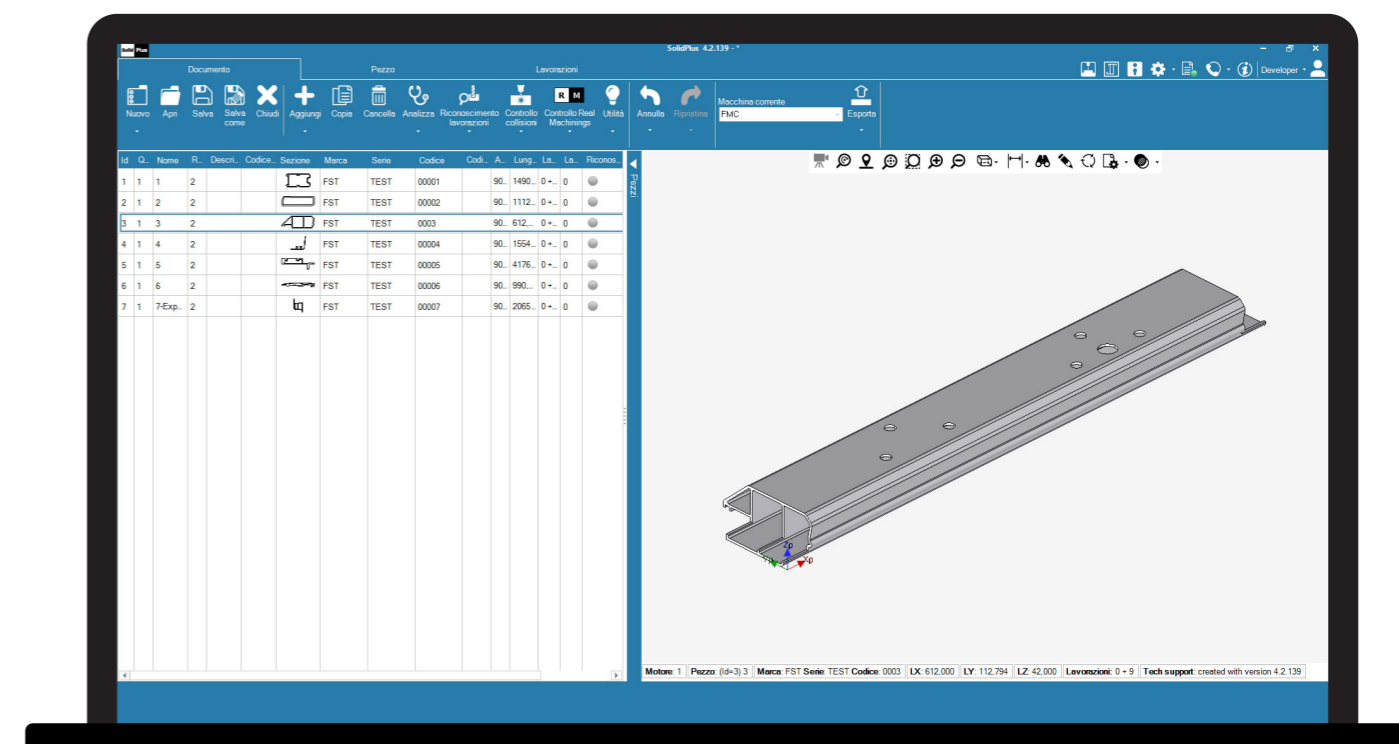
and transfers the data to the CAM of the machine. Solid Plus contributes to the standardization of the production process, and any changes to the CAM program are made starting from the 3D drawing, ensuring constant control by the technical office.



Automation of data transfer from 3D technical drawing to the workshop

Solid Plus reads and imports data from 3D files in STEP format produced by 3D CAD software, such as SolidWorks, Autodesk Inventor, Catia, ProE, etc. A feature of Solid Plus is its agility in handling individual files, but also folders containing multiple files, or a set of parts (assembly). When importing an assembly, the software allows extracting and selecting all the elements that need to be processed, excluding

other parts. Solid Plus recognizes the origin section of the profile and determines all the areas from which material has been removed, applying the corresponding CAM machining. If the machining strategy proposed by the software does not match the desired outcome, it is possible to manually intervene and set an alternative machining strategy.

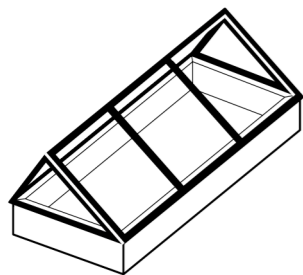




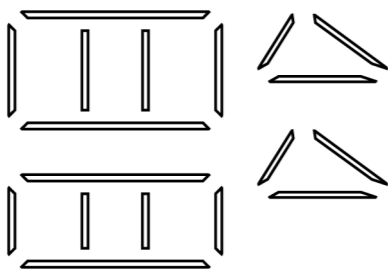
Full integration with machines

Fully integrated with FOM production lines and machining centers, the data processed with Solid Plus is directly imported by the machines' CAM.

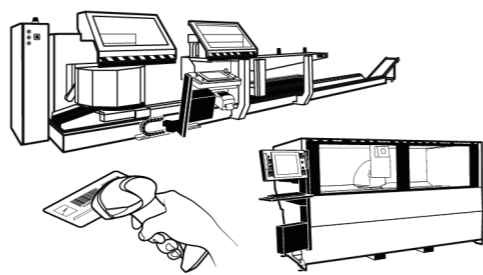
3D drawing with cutting angles and machining



Profile recognition cutting lenght, machining



Creation of cutting and machining lists and execution on a cutting machine and CNC



Macro management: automation of complex machining recognition

In the case of complex machining operations, where the proposed machining strategy does not meet our needs, it is possible to associate a pre-stored

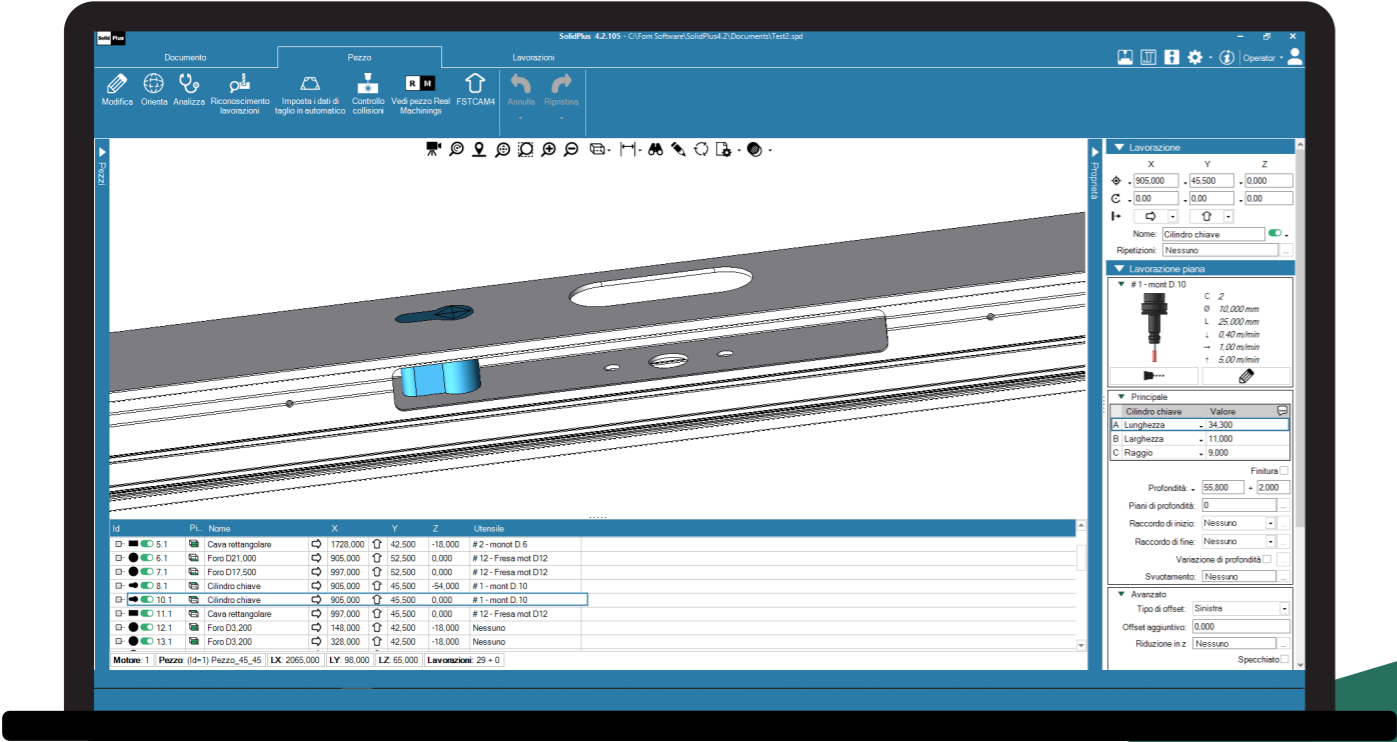
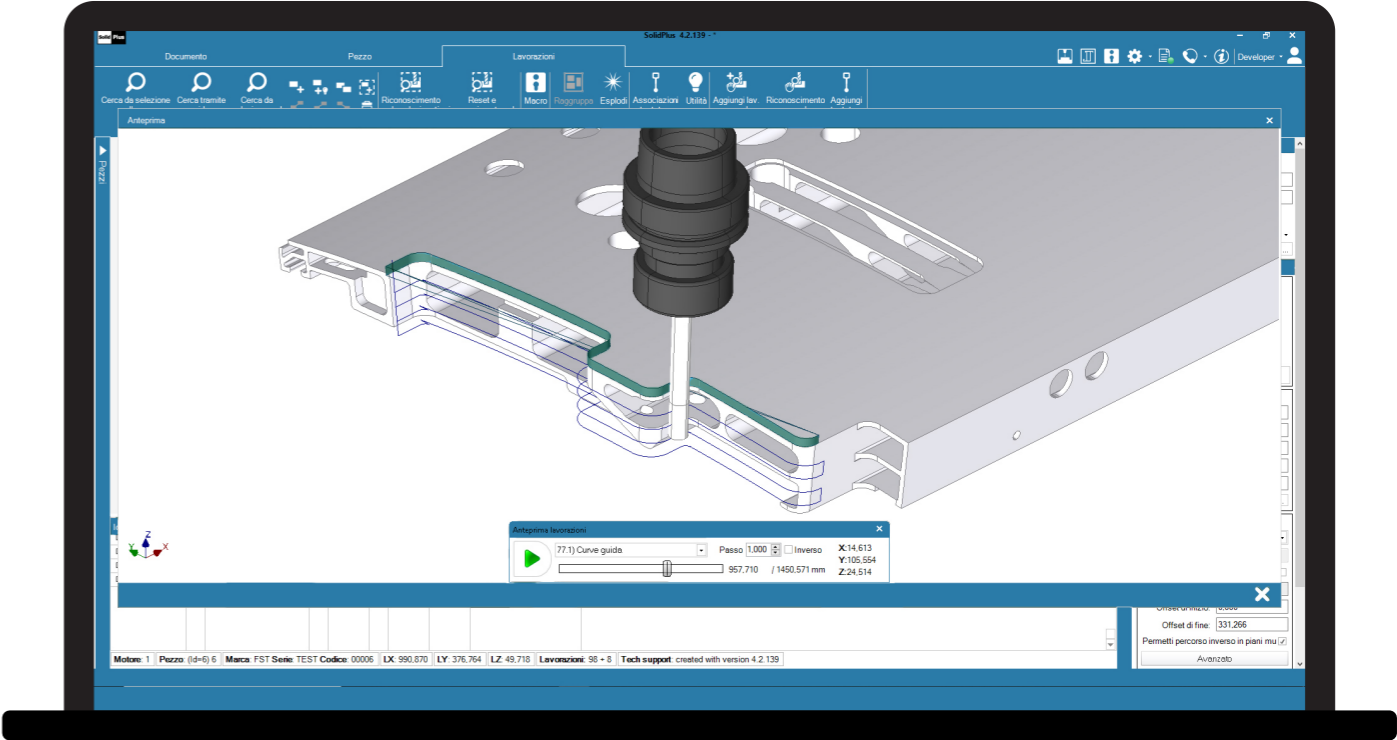
solution (macro) that the software will automatically apply when the same situation occurs again during the recognition of other pieces.

Multi-machine management

Solid Plus is capable of simultaneously connecting to multiple machines, each with its own profile and tool library. This allows for increased productivity and flexibility, enabling the workload to be easily and quickly distributed among machines with different characteristics.

Measurement probe management

A feature of Solid Plus is the management of the measurement probe, which facilitates the control of any discrepancies in the piece so as to correct any position of the machining on the extruded piece.





FSTML



FSTML is the software dedicated to managing the machining library (macros)

The intuitive interface of FSTML has been specially developed to create and manage parametric macros that automatically adapt to profiles. Perfectly integrated with machining centers and/or machining lines from FOM Industrie, FSTML connects to the machine database, synchronizing tool tables and profile archives. In the event that it is connected to more than one machine, FSTML assigns the most suitable tool to the macros and sets differentiated

machining rules for each machine.

FSTML is integrated with major software producers through the P2K2 format (FOM standard), while for specific formats such as NCX or NCW, additional modules are available for importation. FSTML's powerful macro management engine also handles parametric macros and allows for setting rules to automatically modify macros based on information received from office software.

Features of FSTML:

3D design environment

Profile library with customisable hook points

Multi-machine management (machining centres or lines)

Multiple profile macro association

Flipping or parametric macro management

Macro/machining replacement rules management

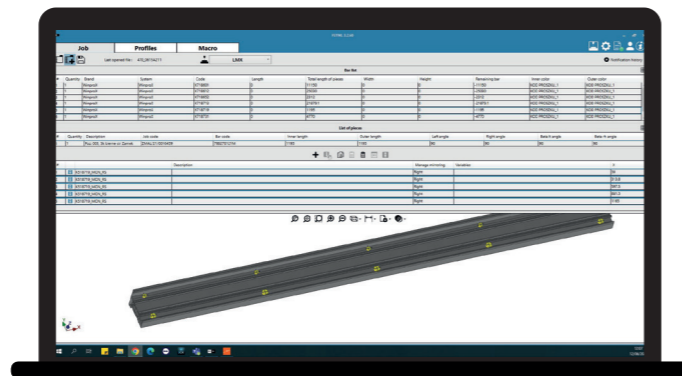
Connection to FOM machines for importing tool tables and automatic alignment of the profile position in the machine

Import and export driver via FOM protocol

Export or import driver for NCX, NCW or other customised formats (optional)

Machine connection

Fully integrated with the CAM systems of machining centers and lines from FOM Industrie, FSTML imports the tool table from each connected machine and automatically synchronizes the profile's processing position on the machine with its position in the ML archive, thereby speeding up the software startup process.

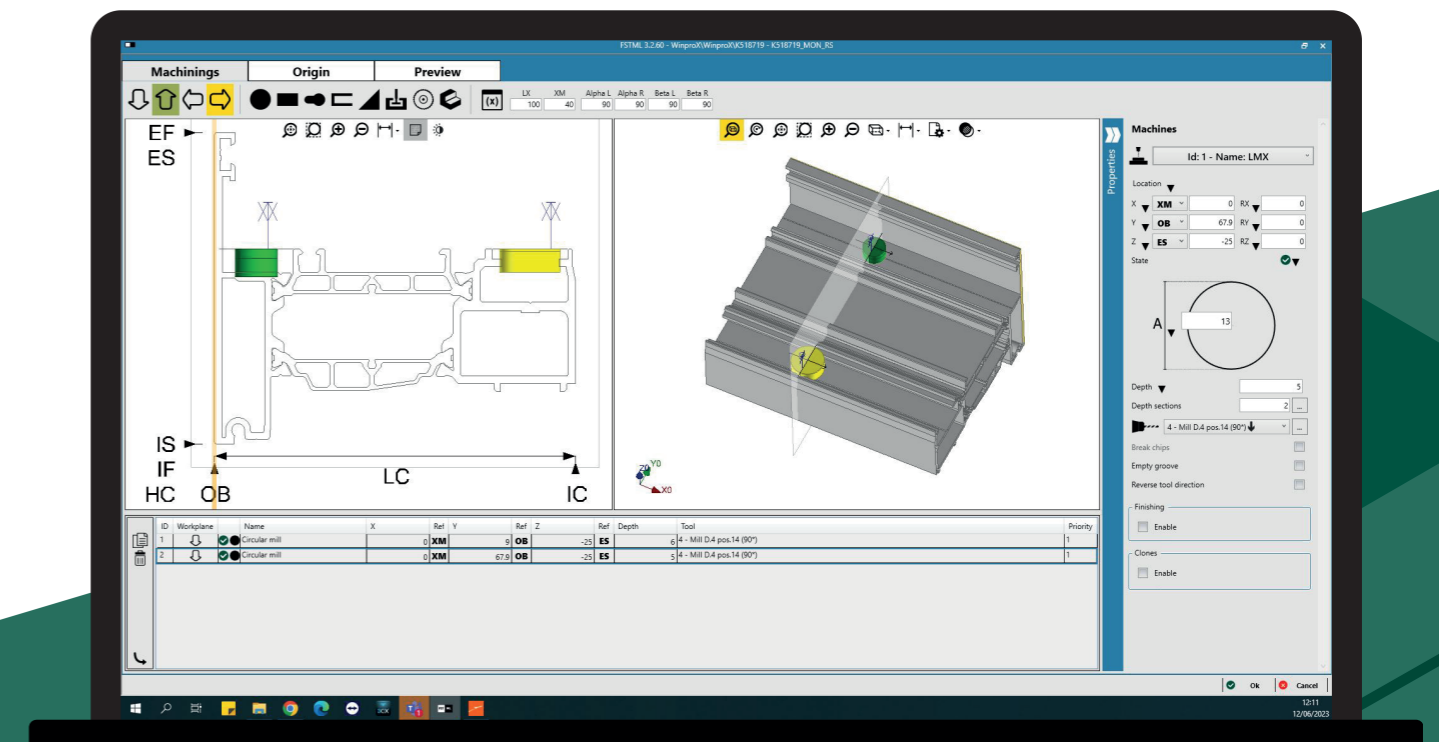
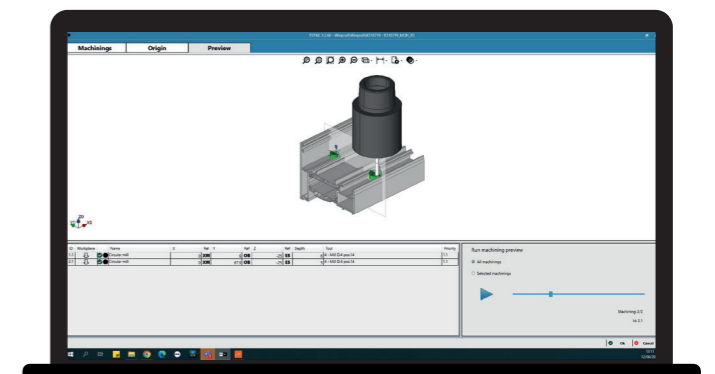
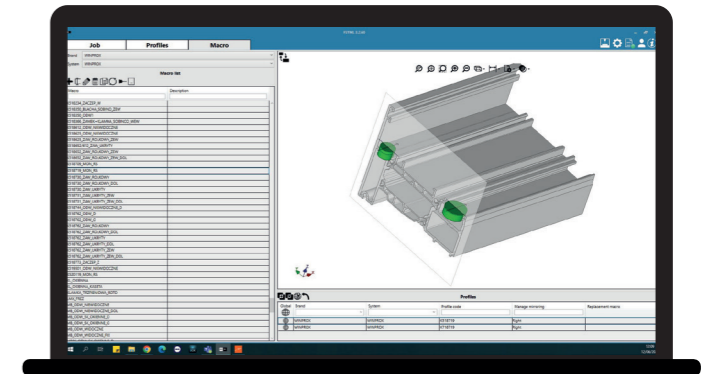


Centralized macro library

Macros designed with FSTML can be used on all machines connected to the software, as the user specifies the optimal tool for each machine during the design phase. Additionally, based on each machine's characteristics, different execution modes for machinings can be defined.

Parametric macro management and machinings replacement rules

FSTML also manages parametric macros whose position, size, and repetitions adapt based on information received from office software. In cases where the office software has its own machining library, FSTML allows you to set replacement rules to modify the received machinings according to your needs.





sales

FSTCPQ



Web-Based Product Configurator

FSTCPQ is a web-based commercial configurator, designed to optimize and simplify the work of the sales force, especially when dealing with complex

or highly customized products: with FSTCPQ, distributing heavy and expensive paper price lists is no longer necessary.

Quick and guided quotation

FSTCPQ guides the operator through the product configuration, offering only available options, thus avoiding errors and simplifying the quotation process. The quote can be immediately printed or sent via email in PDF format.

Quotations on the go

FSTCPQ is a web-based application that can be used with any device (computer, tablet, or smartphone) and any operating system (Windows, iOS, Android), allowing you to create quotations even outside your office.

Always updated price lists

With FSTCPQ, your sales force is always updated on new products and changes to existing ones, avoiding the risk of making offers based on outdated price lists.

User level management and sales network control

For comprehensive management of your sales organization, the system supports different user levels with dedicated visibility and functionalities. With FSTCPQ, the company not only simplifies the activities of its sales network but also gains greater visibility and control over the sales force's operations and market trends. Depending on the user's level, FSTCPQ allows detailed analysis of each quote or the viewing of aggregated data based on different parameters: area, item, period, etc.

Features of FSTCPQ:

Automation and optimization of the sales process

Guided product configuration

Fast and error-free quotation

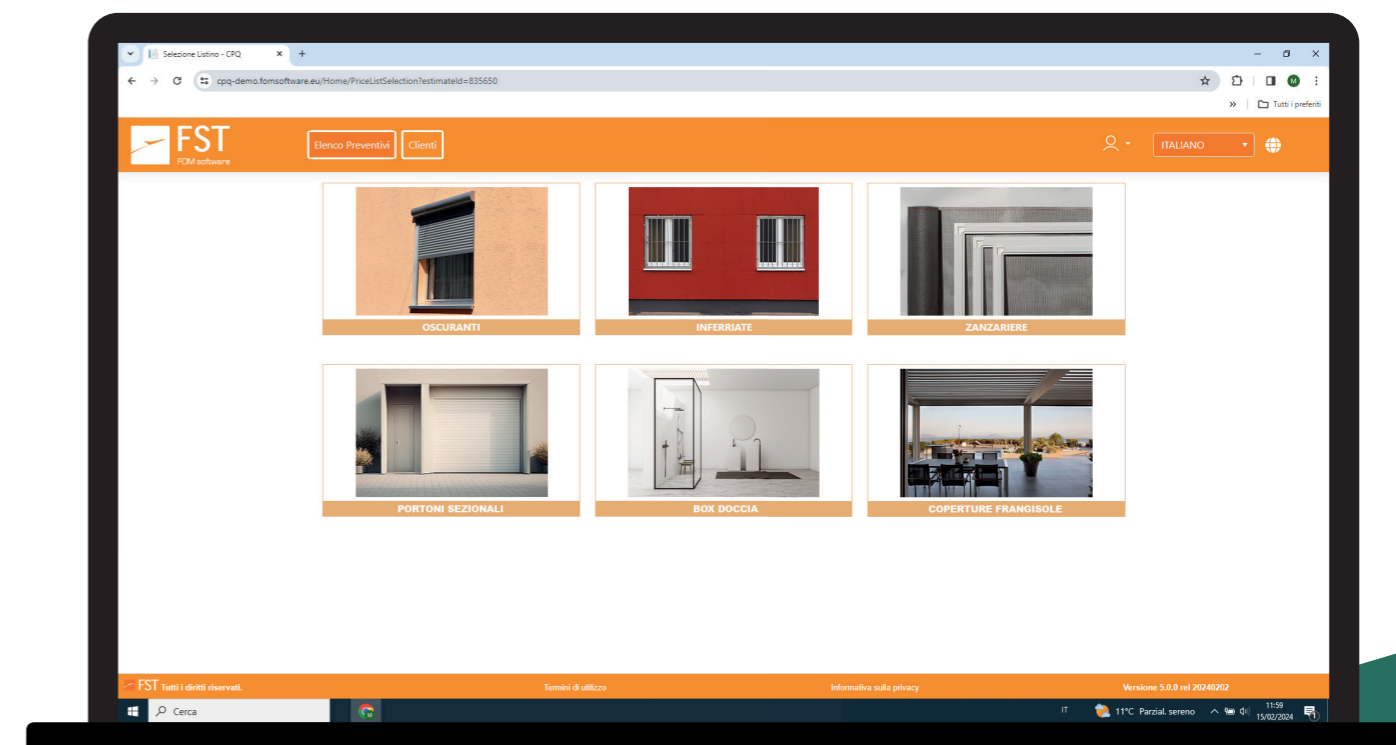
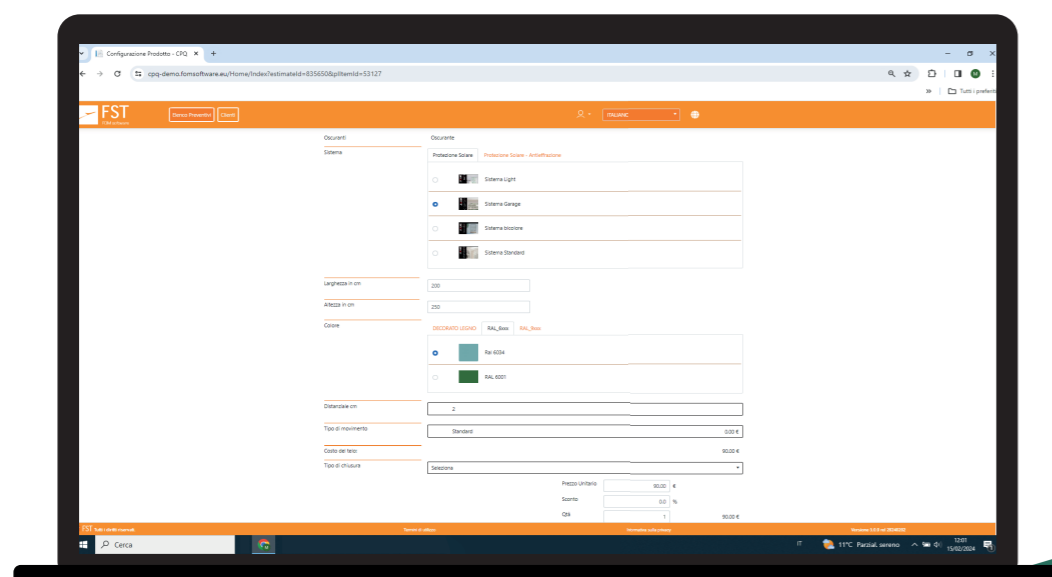
Customizable quotation layout

Accurate price calculation

User level management

Monitoring of reseller activity

Greater visibility and control over the sales network's operations





WSVisor



WSVisor is a desktop application for the constant monitoring of machine or production line productivity

The application collects data on machine operation and productivity over a selected period of time.

Data Export for Integration with M.E.S. Systems

The generated data can be exported in CSV format, allowing for further analysis in the most widely used MES systems or directly in Microsoft Excel®. Upon request, data can be exported in custom file formats based on customer needs.

Data Display

The collected information is presented in table or chart format, enabling quick analysis without interfering with normal production activities.

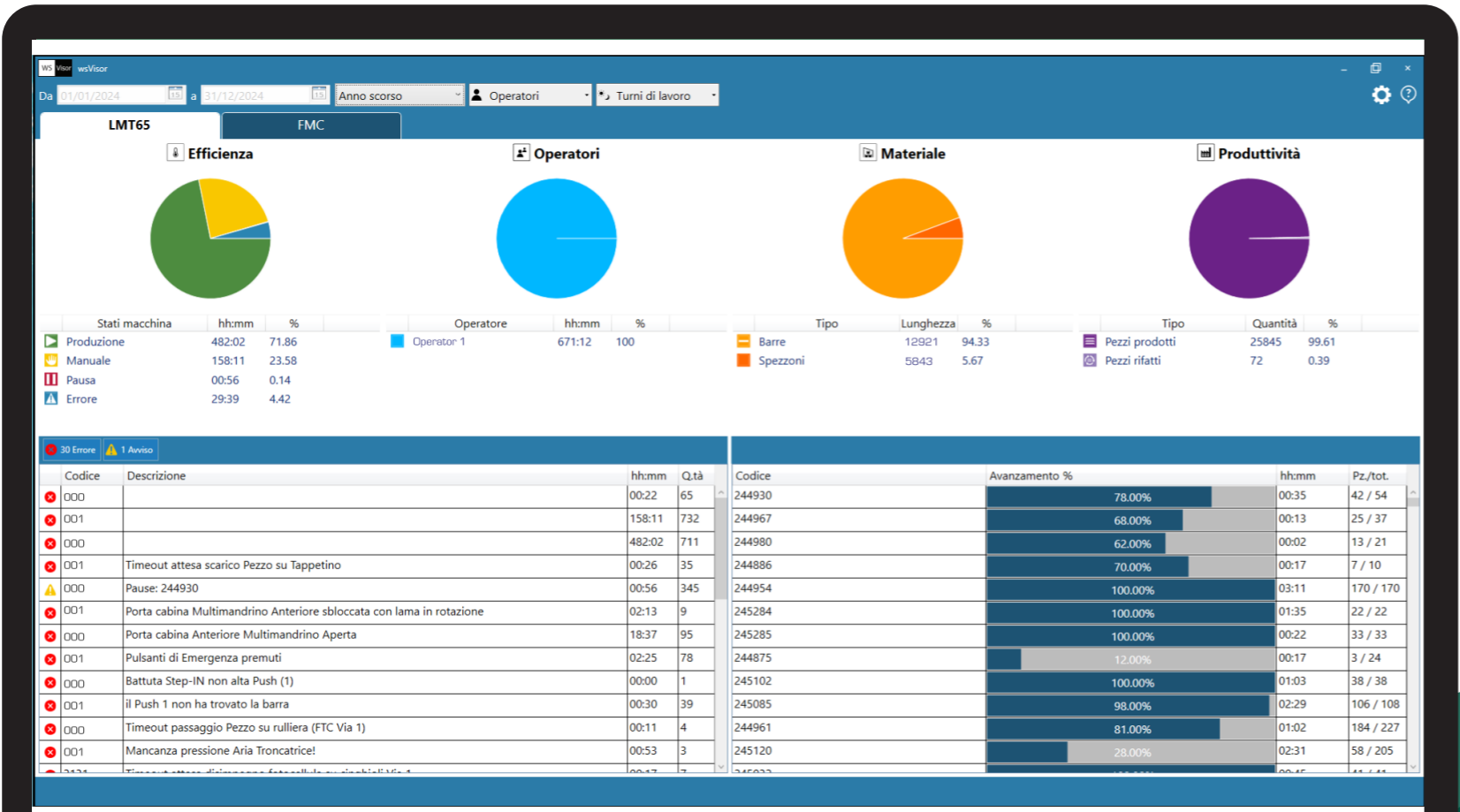
Machine Compatibility

The WSVisor application is compatible with Industry 4.0-ready machines.

Features * of WSVisor:

- Machine efficiency reports
- Production reports
- Incoming material reports
- Work time reports per operator
- Error and machine alarm notifications by type and frequency
- Production order progress tracking
- Data export for integration with MES and Microsoft Excel®

*Features may vary depending on the connected machine



04.2025_versione 1.1



FST S.r.l. Via Mercadante 85, I - 47841 Cattolica (RN), Tel. 0541.832.888

info@fomsoftware.com

www.fomsoftware.com